

TES25-265 v1.0



Lessons learned - A PS worker placed detonator protection inside a worksite

WHAT HAPPENED?

A COSS/PS incorrectly placed a possession limit board and detonators inside of the limits defined for a worksite.

Following the placement, the COSS/PS reviewed the protection, considered that something appeared to be not quite right but failed to take any further action.

UNDERLYING CAUSE

The COSS/PS failed to carry out suitable and sufficient checks to verify that the site of work matched the information as planned in the Safe Work Pack and agreed with the PICOP

LESSONS LEARNED

- Always ensure that suitable and sufficient checks are done before commencing work.
- Always check your work once completed;
- If something appears incorrect, contact the PICOP or on-call representative and ask for it to be verified;
- Never walk away without taking action if something appears incorrect.

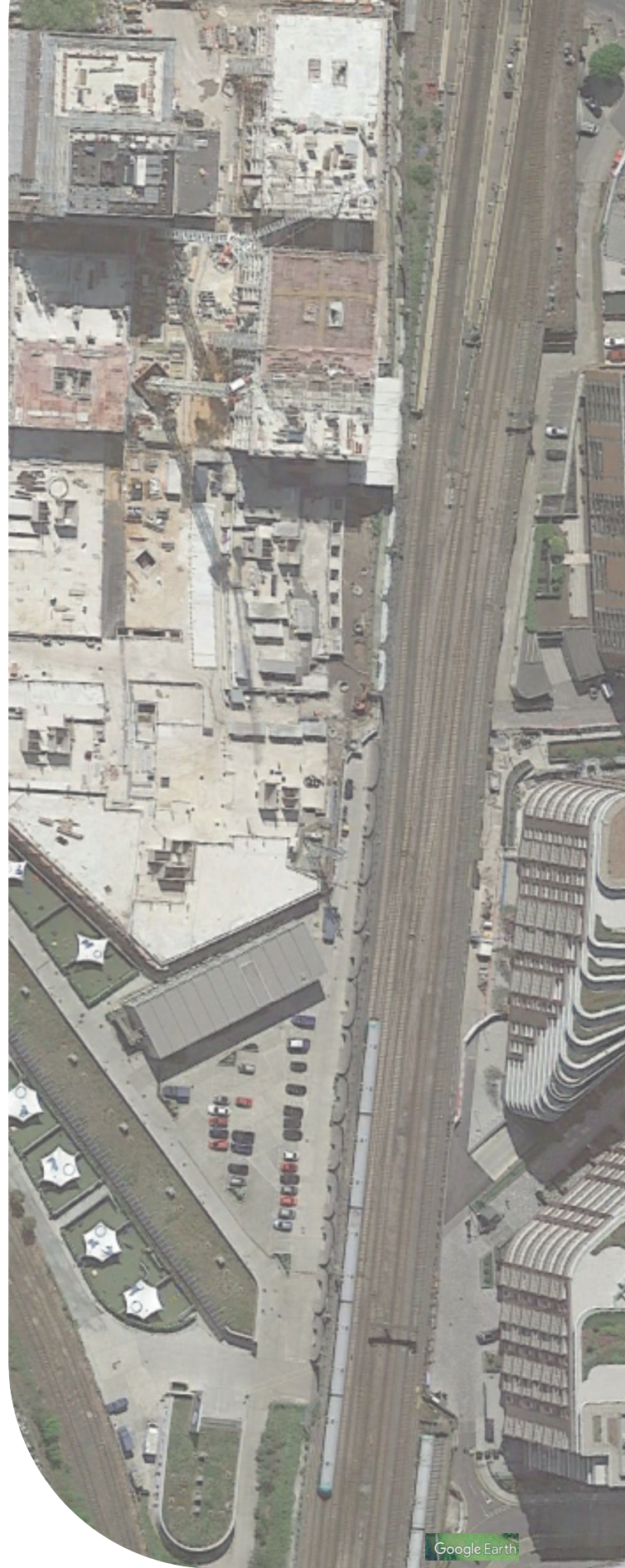
CONSEQUENCES FOR THE PS

The COSS/PS was suspended from working for a period of time, was subject to D&A testing and was required to undertake a briefing and mentored shifts before being allowed to work unsupervised.

[Read More >>>](#)

TIME TO THINK – UNSAFE BEHAVIOURS

- Have you ever carried out a task that you were not sure how to complete properly, but you did it anyway because you did not want to feel foolish by admitting your lack of understanding to a colleague?
 - If you are concerned that you do not know how to carry out a task properly or safely or that the plans or instructions that you have been given are incomplete, unworkable, too difficult, or unsafe in any way:
- **STOP WORK.**
 - **GO TO A PLACE OF SAFETY.**
 - **TAKE 5 MINUTES TO THINK CLEARLY ABOUT THE SITUATION.**
 - **CALL THE TES2000 ON-CALL REPRESENTATIVE FOR SUPPORT AND FOR FURTHER INSTRUCTIONS.**
 - **DO NOT RE-COMMENCE WORKING UNTIL:**
 - You have agreed a safe system of working with the TES2000 On-Call Representative,
 - The correct and valid plans / documentation are in place,
 - You have received an authorisation code from the TES2000 On-Call Representative if the plan has been changed.



SAFETY FIRST - EVERYONE HOME SAFE

Safety, Health, Environment, Quality (SHEQ)
Email: SHEQ@TES2000.co.uk
Out of hours SHEQ advice: 07935 500 054



TES Safety App